

# MONTHLY MEMBERSHIP PROGRESS REPORT

LOCATION CZECH REPUBLIC

District 122

Results as of: 5/31/2023

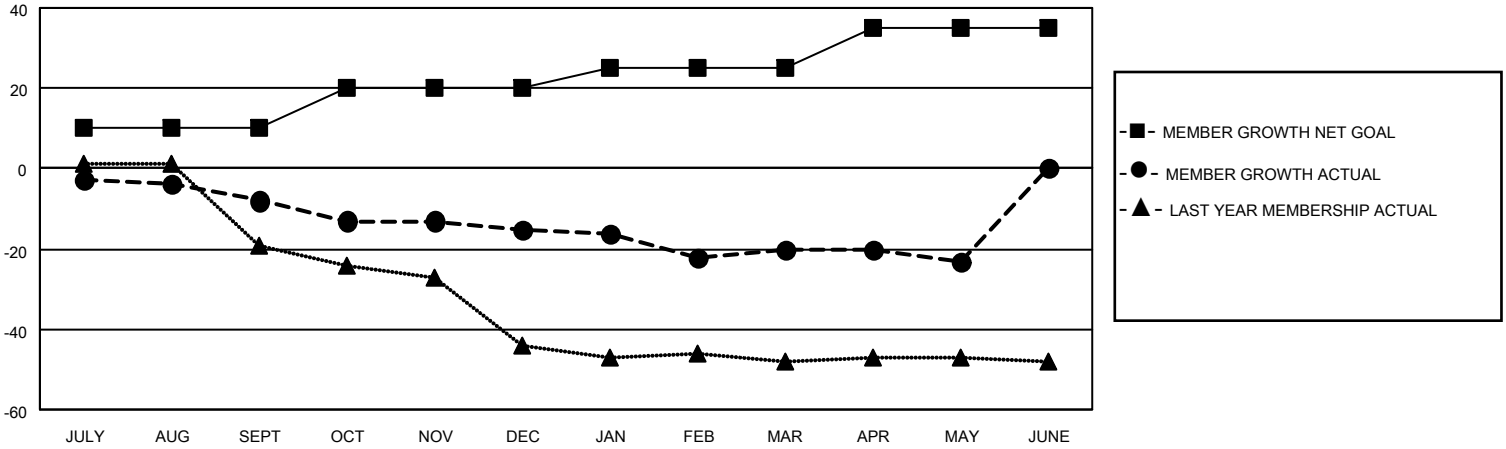
Clubs			
RESULTS FOR 2022-2023			
QUARTER	NEW CLUB GOAL	NEW CLUBS	DROPPED CLUBS
JULY/AUG/SEPT	0	0	0
OCT/NOV/DEC	0	0	0
JAN/FEB/MAR	0	0	0
APR/MAY/JUNE	0	0	0

Members			
RESULTS FOR 2022-2023			
QUARTER	MEMBER GROWTH NET GOAL	MEMBER GROWTH ACTUAL	DROPPED MEMBERS ACTUAL (including transfers)
JULY/AUG/SEPT	10	3	10
OCT/NOV/DEC	10	6	11
JAN/FEB/MAR	5	6	11
APR/MAY/JUNE	10	2	5

**GOALS AND ACTUAL NEW CLUBS CUMULATIVE**



**GOALS AND ACTUAL MEMBERS CUMULATIVE**



DROPPED CLUBS: 0	
<b>DROPPED MEMBERS</b>	
DECEASED	3
CLUB CANCELLED	0
OTHER	34
<b>TOTAL</b>	<b>37</b>

10 CLUBS OF 37 ADDED 1 OR MORE NEW MEMBERS

[CLICK HERE FOR CUMULATIVE MEMBERSHIP DATA](#)

<u>GENDER DISTRIBUTION</u>	
MALE	470 (73.55%)
FEMALE	169 (26.45%)
NON BINARY	0 (0.00%)
PREFER NOT TO ANSWER	0 (0.00%)
<b>TOTAL FAMILY UNIT MEMBERS</b>	
	<b>18</b>
<b>FAMILY MEMBERS PAYING HALF DUES</b>	
	<b>9</b>